

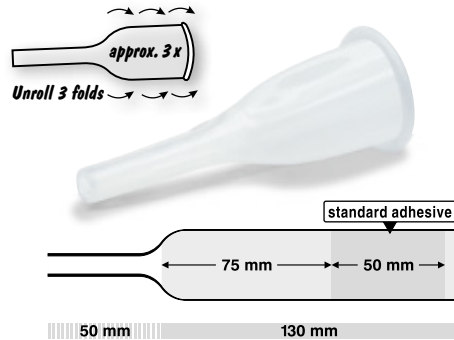
## SAUER-Comfort – self-adhesive Urinary Sheath

30 pieces in one box. 1 protective cloth (matching the size of the sheath) is enclosed.

Sauer  
**Comfort**  
Manufactured without addition of latex

### Standard 97.xx

Total length approx. 180 mm, buffer zone 75 mm, adhesive zone 50 mm, standard adhesive

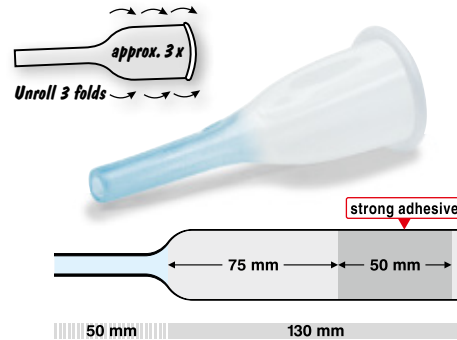


11 sizes  
18–40 mm

Ø mm	Order no.
18	97.18
20	97.20
22	97.22
24	97.24
26	97.26
28	97.28
30	97.30
32	97.32
35	97.35
37	97.37
40	97.40

### Blue 97.7501.xx

Total length approx. 180 mm, buffer zone 75 mm, adhesive zone 50 mm, strong adhesive

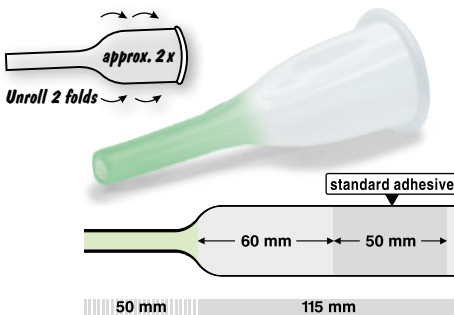


9 sizes  
22–40 mm

Ø mm	Order no.
22	97.7501.22
24	97.7501.24
26	97.7501.26
28	97.7501.28
30	97.7501.30
32	97.7501.32
35	97.7501.35
37	97.7501.37
40	97.7501.40

### Green 97.6000.xx

Total length approx. 165 mm, buffer zone 60 mm, adhesive zone 50 mm, standard adhesive

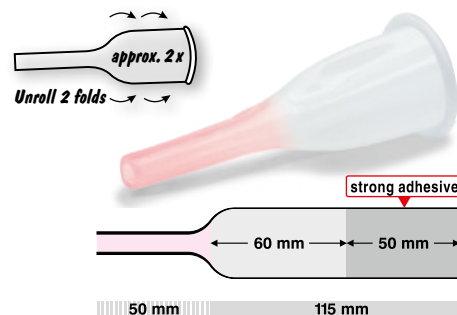


9 sizes  
20–40 mm

Ø mm	Order no.
20	97.6000.20
24	97.6000.24
26	97.6000.26
28	97.6000.28
30	97.6000.30
32	97.6000.32
35	97.6000.35
37	97.6000.37
40	97.6000.40

### Red 97.6001.xx

Total length approx. 165 mm, buffer zone 60 mm, adhesive zone 50 mm, strong adhesive

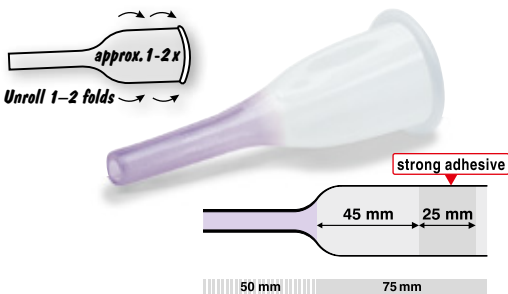


9 sizes  
22–40 mm

Ø mm	Order no.
22	97.6001.22
24	97.6001.24
26	97.6001.26
28	97.6001.28
30	97.6001.30
32	97.6001.32
35	97.6001.35
37	97.6001.37
40	97.6001.40

### Violet 97.4511.xx

Total length approx. 125 mm, buffer zone 45 mm, adhesive zone 25 mm, strong adhesive



9 sizes  
18–35 mm

Ø mm	Order no.
18	97.4511.18
20	97.4511.20
22	97.4511.22
24	97.4511.24
26	97.4511.26
28	97.4511.28
30	97.4511.30
32	97.4511.32
35	97.4511.35

## Self-adhesive Sheaths – SAUER-Comfort

### Connecting tube

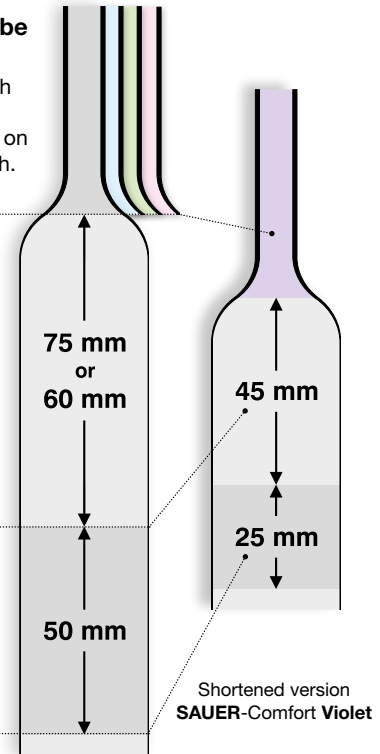
The connecting tube of the sheath is coloured differently depending on the type of sheath.

### Buffer zone

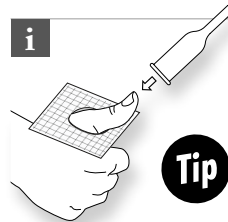
The powder gives a slightly milky look to the buffer zone.

### Adhesive zone

With two different adhesive strengths.



i



Tip

### Before the first use

A 24 mm diameter thumb-sized sheath can be ordered to allow the user to practice handling the self-adhesive sheath.

### Which urinary sheath is most suitable for me?

The decision guide on the reverse side will help you step by step to make your choice.

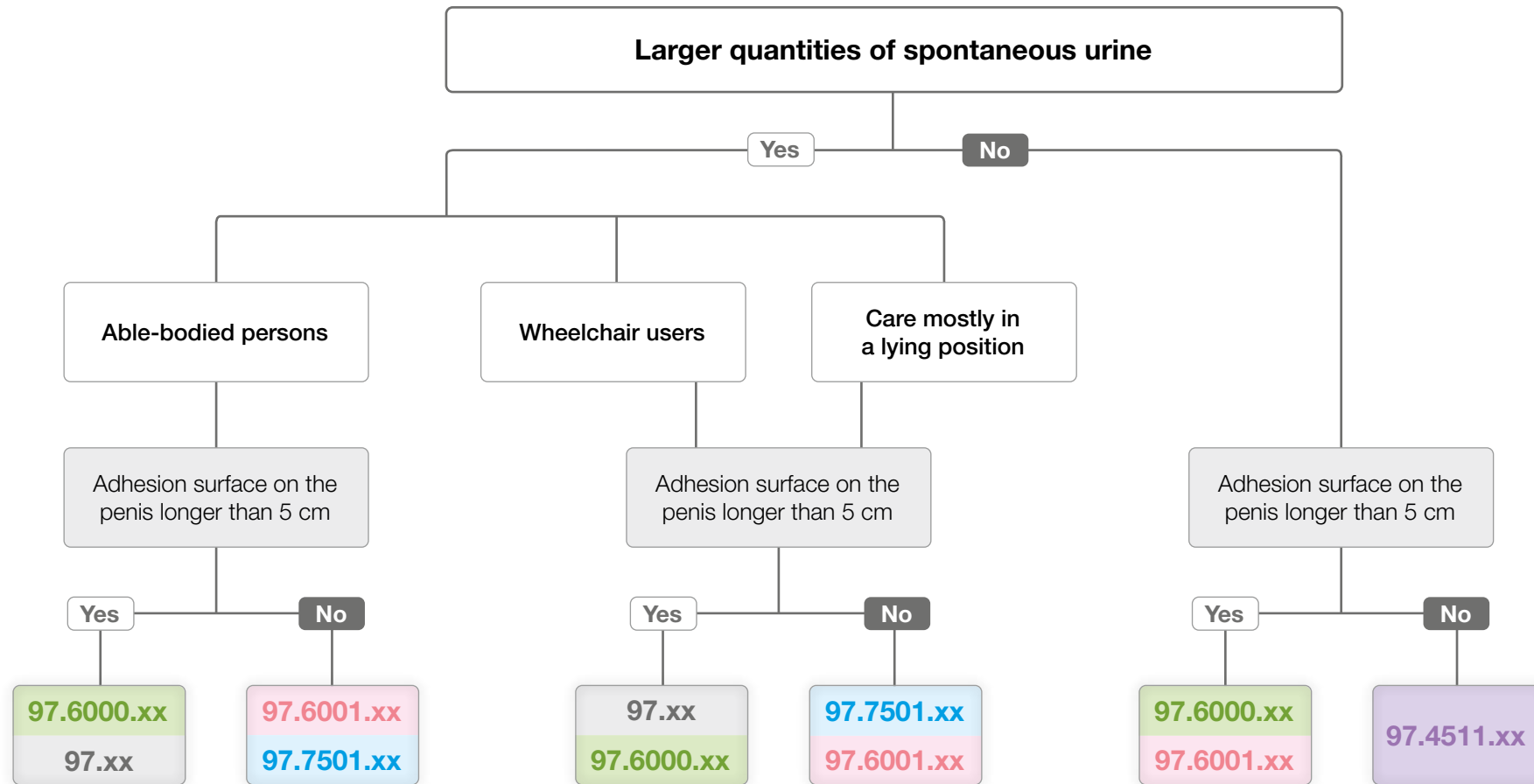
### Measuring Tape

To determine the exact size. Free of charge.



# Choosing the adequate self-adhesive urinary sheath

For the care of a moderate or a severe bladder incontinence



## Important!

- Use appropriate sheath size (determine size using the measuring tape)
- The skin in the adhesive area should be dry and free from grease
- Choose the position of the sheath in a way to make sure that the buffer zone has the required length
- Connect sheath to the urine collection bag and make sure that the urine can drain unimpeded

## Helpline: +49 6226 960 104

If the tested sheaths don't provide a satisfying result, please contact our customer service. Find out more in our "Tutorial – Sheath Drainage System", which we will send you free of charge or which you can download from our homepage.

## SAUER-Comfort – self-adhesive urinary sheath

Order no.	Description	Buffer zone	Adhesive zone	Adhesive	Size
97.xx	Standard	75 mm	50 mm	standard	11 (18–40 mm)
97.7501.xx	Blue	75 mm	50 mm	strong	9 (22–40 mm)
97.6000.xx	Green	60 mm	50 mm	standard	9 (20–40 mm)
97.6001.xx	Red	60 mm	50 mm	strong	9 (22–40 mm)
97.4511.xx	Violet	45 mm	25 mm	strong	9 (18–35 mm)

In the order no. "xx" is replaced by the required size (e.g. 97.7501.26).